

**W4214 BP-352 20/2/06**

# **Instruction Manual to MJ34 Model Wood Cutting Band Saw**



**CE**

**Please read the manual before using it**

IT'S IMPORTANT THAT YOU READ THE ENTIRE MANUAL TO BECOME FAMILIAR WITH THE UNIT BEFORE YOU BEGIN ASSEMBLY

### 1. TECHNICAL SPECIFICATIONS

NO	ITEMS		UNIT	TYPE	
				MJ343B	MJ343C
1	Saw wheel diameter		mm	350	315
2	Table pivot capacity		°	0-45°	0-45°
3	Processing Scope	max height	mm	200	160
		max width	mm	335	300
4	Length of saw blade		mm	2490	2240
	Width of saw blade		mm	6-15	6-15
5	Line speed of saw blade		m/s	12;10/14.4;12	12;6/14.4;7.2
6	Necessary Motor	Power	HP/Kw	1;0.75	3/4;0.55
		Voltage	V	230/110	230/110
		Frequency	Hz	50/60	50/60
		Rotational Speed	RPM	1400/1700	1400/1700

### 2. PACKAGING

#### Accessories

1. mitre gauge (according to the customers' requirement)
2. manual
3. saw mouth board

### 3. IMPORTANT SAFETY INSTRUCTIONS!

**READ ALL INSTRUCTIONS BEFORE USING THIS PRODUCT!**

#### 3.1 WORK AREA

To Avoid of personal injury ,equipment damage ,fire and shock ,make sure your work area is:

- ✓ Free of damp ,wet or rainy conditions
- ✓ Free of flammable gasses or liquids
- ✓ Childproof –use padlocks and master switches when not in use.

- ✓ Well-lit
- ✓ Clean and uncluttered
- ✓ Well-ventilated

### 3.2 THE OPERATOR

COMMON SENSE AND CAUTION ARE FACTORS WHICH CANNOT BE BUILT INTO ANY PRODUCT. THESE FACTORS MUST BE SUPPLIED BY THE OPERATOR. PLEASE REMEMBER:

- ✓ Prevent body contact with grounded surfaces such as pipes or radiators.
- ✓ Stay alert .Never operate equipment if you are tired.
- ✓ Do not operate the product if under the influence of alcohol or drugs .Read warning labels on prescriptions to determine if your judgment reflexes might be impaired.
- ✓ Do not wear loose clothing or jewelry as they can be caught in moving parts.
- ✓ Non-skid footwear is recommended.
- ✓ Wear restrictive hair covering to contain long hair
- ✓ Use eye and ear protection .Always wear:
  - ANSI approved dust mask or respirator when working around metal wood ,and chemical dusts and mists.
  - A full face shield if you are producing metal or wood filings.
  - Ear protectors
- ✓ Maintain proper footing and balance at all times.
- ✓ Do not reach over or across running machines

### 3.3 BEFORE OPERATING

- ✓ Know the machine. Learn its applications and limitations as well as the specific potential hazards.
- ✓ Check for damage. If part of the machine is damaged. it should be carefully inspected to ensure that it can perform its intended function correctly. If in doubt the part should be replaced.
- ✓ Be sure the switch is OFF before plugging in.
- ✓ Make sure tool has been cleaned and properly lubricated.
- ✓ Check for damaged parts before using any tool ,any part that appears damaged should be carefully checked to determine that it will operate properly and perform its intended function.
- ✓ Check for alignment and binding of all moving parts broken parts or mounting fixtures and any other condition that may affect proper operation .Any part that is damaged should be properly repaired or replaced by a qualified technician.
- ✓ Do not use the tool if any switch does not turn off and on properly

### 3.4 SPECIAL SAFETY RULES FOR BAND SAWS

- ✓ Adjusting the upper guide of saw blade to make it higher about 1/8" than the cut material.
- ✓ Saw after the machine rolling regularly select different speed of feeding material according to the different hardness and thickness of wood. Forbid feeding material too fast.
- ✓ Check for proper blade size and type make sure that blade's tension and tracking are properly adjusted according to the instruction to change saw blade.
- ✓ The worker shouldn't leave the place when the machine is working. Don't forget to cut off the main power source when not working.
- ✓ Use foot bolt to forbid the machine leaning to the ground.

### 4. GROUNDING/VOLTAGE

#### 4.1 INSTRUCTION OF GROUNDING

✓ This machine provides power outlet and cable. And there is grounding wire on it. The contact of outlet on the sawing machine must connect with the case of sawing machine. The other outlet should be correctly plug in the standard outlet and the outlet should be installed correctly and connected with the earth.

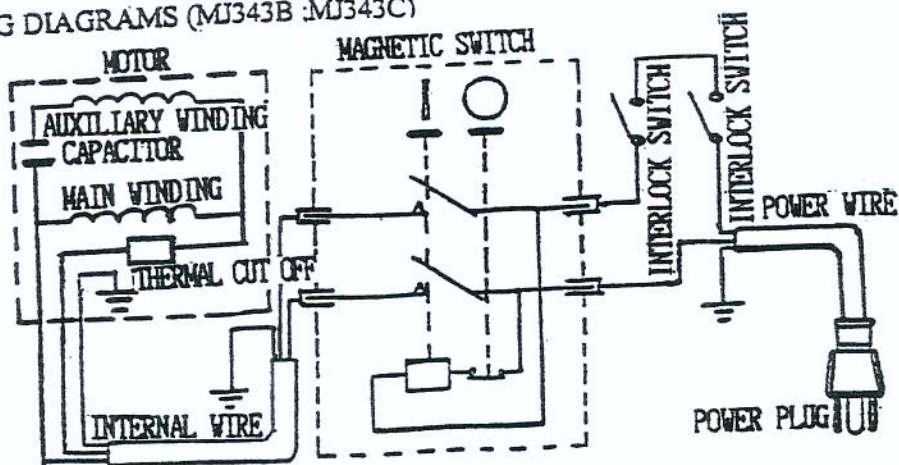
✓ If grounding wire can't be connected properly, it may be struck. Change or repair cable or outlet don't connect the grounding line wrongly.

✓ When the cable is damaged, change or repair it in time.

#### 4.2 CONNECTION OF POWER SOURCE

The single electric current should be used. The protector should be set in order to protect. Assure that the line voltage should agree with the motor voltage on it's plate before running machine.

#### 4.3 WIRING DIAGRAMS (MJ343B : MJ343C)



NOTICE: WE SUPPLY YOU INTERLOCK SWITCHES ONLY WHEN YOU PLACE AN ORDER.

### 5. TABLE'S TINSTALLING AND ADJUSTING

### 5.1.1. Installing Table

Take off the table 83A from the carton and take off the flat washer 28A and butterfly nut 73A, put the screw 76A in the hole of rolling fixed frame 95A, then tighten the flat washer and butterfly nut.

### 5.1.2. Installing the Rear Rail

From the carton, remove the rear rail, and the following hardware.

3 flat washer(6)

3 hexagon socket cap head screws(M6X12)

.At the back of the table, put the screws in the holes of the rear rail and table side.

.Tighten the screws with screw driver.

### 5.1.3. Installing the Front Rail

The hardware using for the front rail is below.

4 flat washer(8)

4 thumb bolt.

.Put the front rail in position and make the holes with the holes of table must be in line.

.Put the butterfly bolt in the table's holes through the four flat washers and front rail.

.Tighten all the butterfly bolts.

### 5.1.4. Put the upper guide board accessory on the table's, adjust this part in proper position and then lock down the rip fence handle.

## 5.2. Adjusting the Miter Gauge

You can set the miter gauge at 0° -45° to comply with the cutting requirement.

.Loosen the miter gauge knob.

.Place 0-90° square against the miter gauge rod and the miter gauge base.

.If the rod is not square, adjust the rod, and tighten the knob.

.Loosen the cross recessed pan head screw M5 × 10.

.Adjust the indicator and make the scale just in the line with 0°; and then tighten the cross recessed pan head screw.

## 5.3. Setting the Cutting Height

**WARNING:** Make sure the switch is off, and your plug is unplugged. Failure to do so could result in electric injury.

.This item machine has one set device which can be adjusted according to the height of the workpiece being cut.

.Loose the butterfly nut on the side panel, adjust the guide pole upward or downward to meet the workpiece's request.

.Rotate the micro adjusting knob clockwise or to have the device more closer to the workpiece.

.Tighten the butterfly nut clockwise.

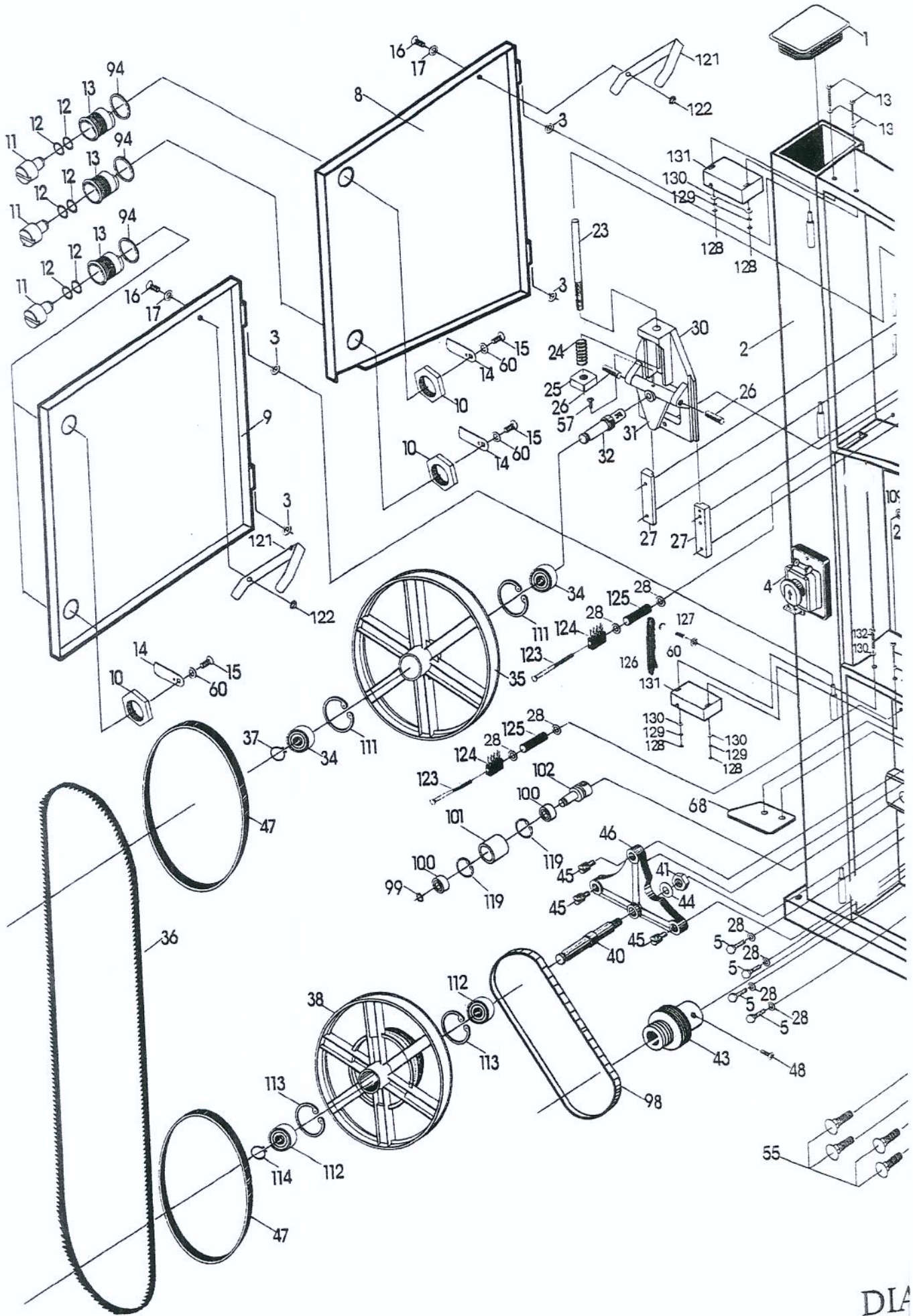
#### 5.4.Adjusting Table Angle

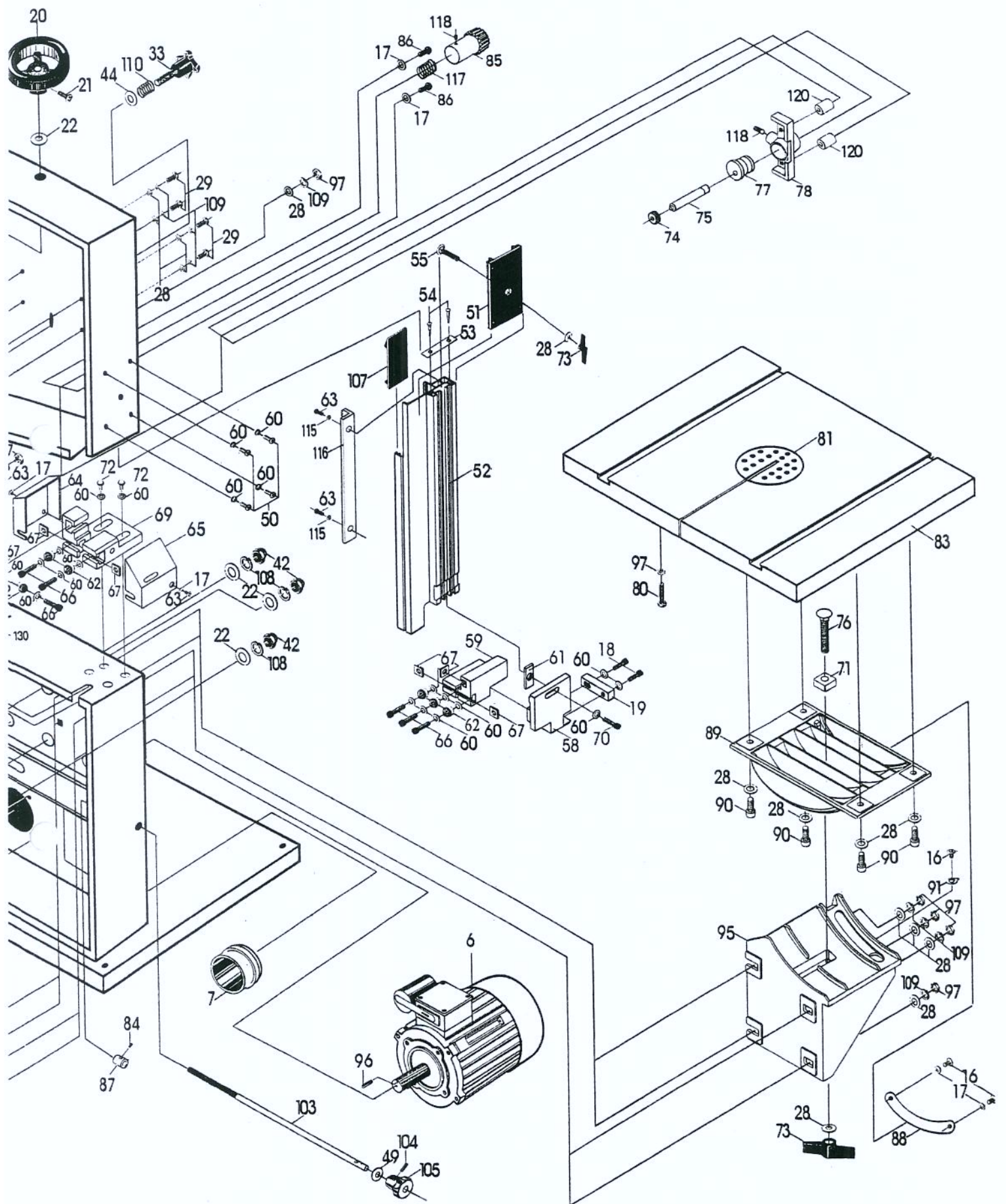
If table is to be used at an angle.first to loosen butterfly nut and adjust table to the desired angle using the scale on the rotating angle rule.

.Tighten the butterfly nut securely so that the table will not be removed during operation.

## 7.BREAKDOWN AND THE METHODS OF FIXING BREAKDOWN

Items	Reason	Fixing Method
1.The motor can not start.	<ol style="list-style-type: none"> <li>1.The power isn't on.</li> <li>2.The fuse of electric Circuit has blown.</li> <li>3.The electric cable is damaged.</li> <li>4.The switch isn't "on".</li> <li>5.The motor is damaged.</li> </ol>	<ol style="list-style-type: none"> <li>1.Check all the electric circuit.</li> <li>2.Change the fuse.</li> <li>3.Repair or change the cable.</li> <li>4.Check the switch.</li> <li>5.Change the motor.</li> </ol>
2.The saw blade can not cut or the cutting speed is slow.	<ol style="list-style-type: none"> <li>1.The saw blade is installed on the contrary, the saw teeth cut on the same direction.</li> <li>2.There are some hard things such as iron or stone etc in the saw teeth.</li> <li>3.The saw teeth is passive for long time using.</li> </ol>	<ol style="list-style-type: none"> <li>1.Turn over the saw blade and install it again.</li> <li>2.Manage to remove the hard things, sharpen the saw teeth.</li> <li>3.Repair and gring the sawteeth to make it sharp.</li> </ol>
3.Slipping saw blade.	<ol style="list-style-type: none"> <li>1.The saw blade is not straight.</li> <li>2.The upper wheel doesn't parallel with the lower one.</li> <li>3.The guiding installation of the saw blade has deflected.</li> </ol>	<ol style="list-style-type: none"> <li>1.Reinstall the up-to-standard saw blade.</li> <li>2.Adjust the upper wheel to make it parallel with the lower one.</li> <li>3.Adjust the guiding installation to make its running direction as same as the saw blade's.</li> </ol>
4.The saw blade is broken.	<ol style="list-style-type: none"> <li>1.The direction of the guiding board is deflected.</li> <li>2.The deflection of the saw teeth is too small or the saw teeth is passive.</li> <li>3.When cutting too small diameter wood, the saw blade is sprained badly.</li> <li>4.Speed of filling wood is too high.</li> <li>5.The saw blade is too tightened.</li> <li>6.The saw blade is over warrantable period.</li> </ol>	<ol style="list-style-type: none"> <li>1.Adjust the guiding board correctly.</li> <li>2.Reshape the saw route, sharpen the saw teeth.</li> <li>3.Reinstall the narrow saw blade to make the saw route wide.</li> <li>4.Slow the speed of sending materials.</li> <li>5.Loosen the saw blade properly.</li> <li>6.Renew the saw blade.</li> </ol>





GRAM A

## PARTS LIST FOR DIAGRAM A

NO.	DEC.	QTY	NO.	DEC.	QY T.
					3
A1	Column cover	1	A42	Lid shape nut	1
A2	Sawing body	1	A43	Motor wheel	1
A3	Copper washer 6	4	A44	Flat washer 16	3
A4	switch	1	A45	Double end bolt	1
A5	Hexagon head bolt M8 × 20	4	A46	Big triangular frame	2
A6	Motor	1	A47	Rubber belt	1
A7	Dust collect tube	1	A48	Hexagon socket set screw with flat point M5 × 8	1
A8	Upper door	1	A49	Flat washer 10	4
A9	Lower door	1	A50	Cross recessed pan head screw M6 × 12	1
A10	Thin nut	4	A51	Guide pole frame	1
A11	Rolling axle	4	A52	Guide pole	1
A12	Curved spring washer 10	8	A53	End cover	1
A13	Rolling axle sleeve	4	A54	Cross recessed pan head tapping screw ST5.0 × 16	2
A14	Closing door board	4	A55	Square-necked bolt M8 × 25	5
A15	Cross recessed countersunk head screw M6 × 8	4	A57	Semicircle head screw M6 × 20	1
A16	Cross recessed pan head screw M5 × 8	9-2-2	A58	Upper guide frame	1
A17	Flat washer 5	10-2	A59	Upper guide bearing frame	26
A18	Hexagon socket cap head screw M6 × 20	2	A60	Flat washer 6	1
A19	Upper guide key	1	A61	Strip-shaper nut	6
A20	Handwheel	1	A62	Bearing 80016	4
A21	Cross recessed pan head screw M6 × 16	1	A63	Cross recessed pan head screw M5 × 10	1
A22	Flat washer 12	4	A64	Left safety cover	1
A23	Adjusting screw pole	1	A65	Right safety cover	6
A24	Spring	1	A66	Hexagon socket cap head screw M6 × 16	6
A25	Square-shaper nut	1	A67	Square nut M6	1
A26	Steel pin	2	A68	Nut board	1
A27	Saddle guide board	2	A69	Lower guide frame	1
A28	Flat washe 8	24	A70	Hexagon socket cap head screw M6 × 18	1
A29	Hexagon head bolt M8 × 20	4	A71	Slide block	1
A30	Upper wheel saddle	1	A72	Hexagon head bolt M6 × 18	2
A31	Small triangular frame	1	A73	Butterfly-shaper nut	2
A32	Upper wheel shaft	1	A74	Small gear	1
A33	Adjusting handle	1	A75	Gear rod	1
A34	Bearing 80202	2	A76	Square-necked bolt M8 × 50	1
A35	Upper wheel	1	A77	Eccentric wheel	1
A36	Saw blade	1	A78	Gear rod frame	1
A37	Axis elastic ring d15	1	A80	Hexagon head bolt M8 × 44	1
A38	Lower wheel	1	A81	Insert	1
A40	Lower wheel shaft	1	A83	Table	1
A41	Hexagon nut M16	1	A84	Hexagon socket set screw with flat point M6 × 12	1

## PARTS LIST FOR DIAGRAM A

NO.	DEC.	QT Y.	NO.	DEC.	QT Y.
A85	Gear handle	1	A128	Hexagon nut M4	4
A86	Cross recessde pan head screw M5 × 16	2	A129	External teeth washer 4	4
A87	Ring for press-wheel screw pole	1	A130	Flat washer 4	8
A88	Rotating angle rule	1	A131	Interlock switch (with house)	2
A89	Semi-round support frame	1	A132	Semicircle head screw M4 × 30	2
A90	Hexagon socket cap head screw M8 × 20	4			
A91	Point	1			
A94	Plastic bush	4			
A95	Rotating bracket	1			
A96	key	1			
A97	Hexagon nut M8	7			
A98	Drive belt	1			
A99	Axis elastic ring d12	1			
A100	Bearing 80101	2			
A101	Press-wheel	1			
A102	Press-wheel shaft	1			
A103	Press-wheel screw pole	1			
A104	Spring-type straight pin 3 × 20	1			
A105	Press-wheel knob	1			
A107	Protect board	1			
A108	Spring washer 12	3			
A109	Spring washer 8	10			
A110	Spring	1			
A111	Circlip for hole d35	2			
A112	Bearing 80203	2			
A113	Circlip for hole d40	2			
A114	Axis elastic ring d17	1			
A115	Lock washer external teeth 5	2			
A116	Guide pole rack	1			
A117	Gear shaft spring	1			
A118	Hexagon socket set screw with flat point M6 × 5	2			
A119	Circlip for hole d28	2			
A120	Gear shaft bush	2			
A121	Spring leaf	2			
A122	Spring leaf block	2			
A123	Step bolt M8 × 100	2			
A124	Brush	2			
A125	Bush tube for brush	2			
A126	Push stick	1			
A127	Push stick nail	1			

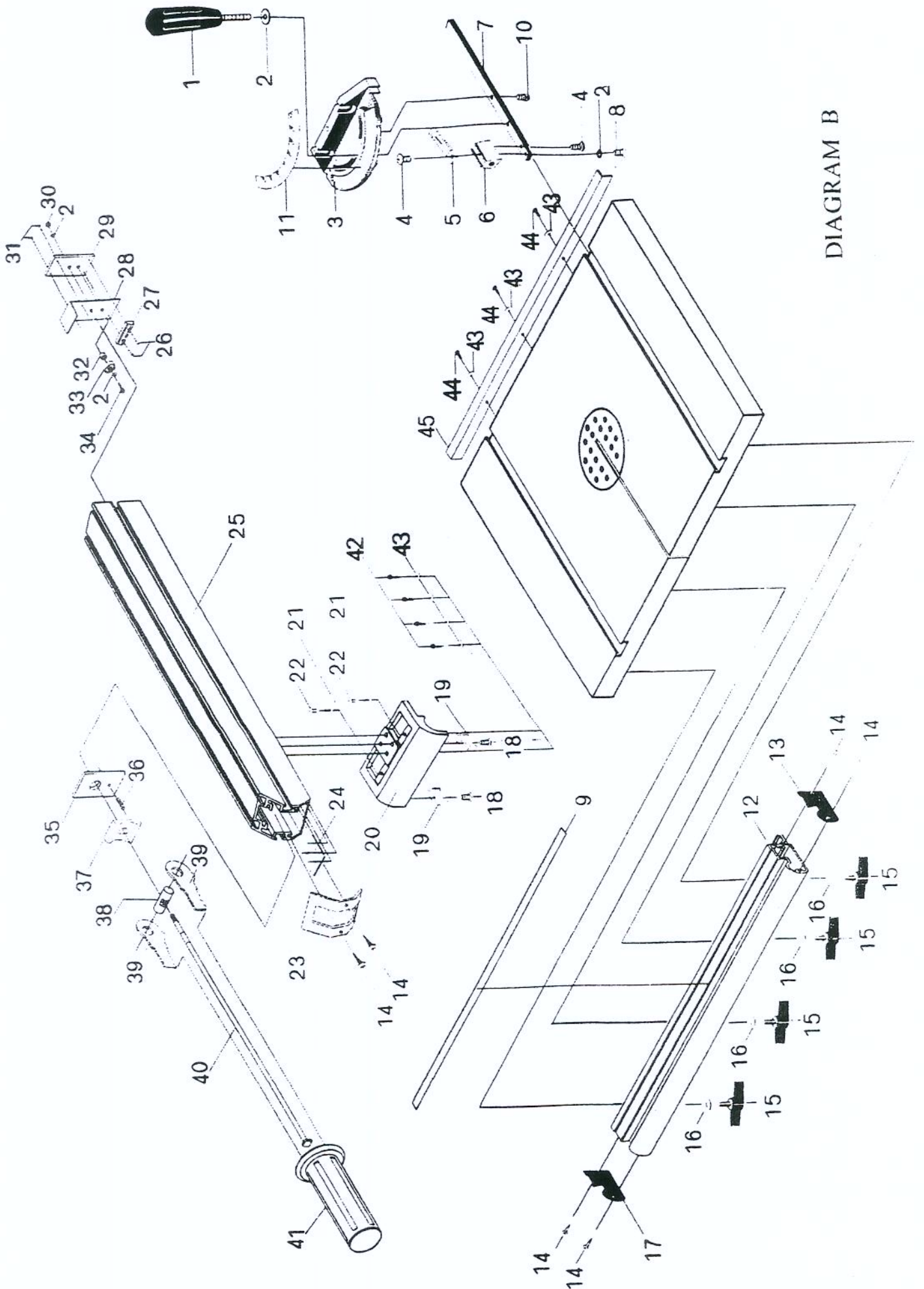


DIAGRAM B

**PARTS LIST TABLE FOR DIARAM B**

NO.	Description	Qty.	NO.	Description	Qty.
B1	Miter gauge knob	1	B28	Lock spring	1
B2	Flat washer 6	4	B29	Lock plate	1
B3	Miter gauge	1	B30	Selflock hexagon nut M6	1
B4	Cross recessed pan head screw M5 × 10	2	B31	Round head rivets with small head 3x7	2
B5	Point	1	B32	Bearing bush	1
B6	Miter gauge block	1	B33	Bearing 80016	1
B7	Miter gauge rod	1	B34	Hexagon socket cap head screw M6 × 24	1
B8	Cross recessed countersunk head screw M5 × 12	1	B35	Rip fence board	1
B9	Scale	1	B36	Spring-type straight pin 3x12	1
B10	Thread dowl	1	B37	Rear block	1
B11	Miter gauge scale	1	B38	Lock eccentric rod	1
B12	Front rail	1	B39	Lock eccentric	2
B13	Right end cap	1	B40	Rip fence lock rod	1
B14	Cross recessed pan head tapping screw	6	B41	Rip fence handle	1
B15	Butterfly bolt	4	B42	Hexagon socket cap head screw M6 × 10	4
B16	Flat washer 8	4	B43	Flat washer 6	7
B17	Left end cap	1	B44	Hexagon socket cap head screw M6 × 12	3
B18	Cross recessed countersunk head screw M5 × 10	2	B45	Rear rail	1
B19	Nylon block	2			
B20	Rip fence frame	1			
B21	Scale indicator	2			
B22	Cross recessed pan head screw M4 × 10	2			
B23	Rip fence cover	1			
B24	Nut board	1			
B25	Rip fence	1			
B26	Round head rivets with small head Φ 3x13	2			
B27	Lock block	1			

# BANDSAW STAND

## SPECIFICATION

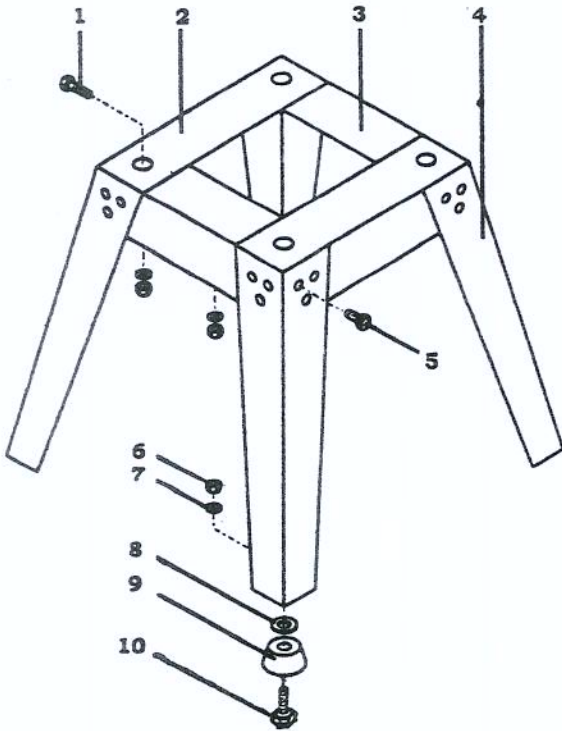
Machine stand for Bandsaw, including all nuts, bolts and fixings for assembly to saw.

## UNPACKING

Carefully unpack the saw stand and all contents from the carton. Check that all the parts are present (see assembly).

## ASSEMBLY

To assemble the saw stand use the illustration below, securing the fixings finger tight only. Do not fully tighten the nuts & bolts holding the legs and cross supports yet.



No.	DEC.	QTY.
1	HEXAGON HEAD SCREW M8X40	4
2	SHORT CROSS STAY	2
3	LONG CROSS STAY	2
4	SUPPORT LEG	4
5	SEMICIRCLE HEAD NAIL M8X16	24
6	HEXAGON NUT M8	32
7	WASHER 8	32
8	WASHER NUT	4
9	RUBBER WASHER	4
10	HEXAGON HEAD SCREW M8X25	4

The saw stand should always be stood on a level floor or supporting surface.

## FASTENING YOUR BAND SAW TO THE STAND

With the aid of an assistant, lift the bandsaw onto the stand so the holes in the base line up with those in the stand. Using the four bolts, nuts and washers supplied tightly secure the saw to the stand. Move the saw on the stand until level, settling the legs and then tighten all the remaining nuts and bolts securely.